



Rab 2B Polyclonal Antibody

Catalog No	YP-Ab-16193
Isotype	IgG
Reactivity	Human;Mouse;Rat
Applications	WB; ELISA;IHC
Gene Name	RAB2B
Protein Name	Ras-related protein Rab-2B
Immunogen	The antiserum was produced against synthesized peptide derived from human RAB2B. AA range:103-152
Specificity	Rab 2B Polyclonal Antibody detects endogenous levels of Rab 2B protein.
Formulation	Liquid in PBS containing 50% glycerol, 0.5% BSA and 0.02% sodium azide.
Source	Polyclonal, Rabbit,IgG
Purification	The antibody was affinity-purified from rabbit antiserum by affinity-chromatography using epitope-specific immunogen.
Dilution	WB 1:500-2000;IHC-p 1:50-300; ELISA 2000-20000
Concentration	1 mg/ml
Purity	≥90%
Storage Stability	-20°C/1 year
Synonyms	RAB2B; Ras-related protein Rab-2B
Observed Band	24kD
Cell Pathway	Cell membrane ; Lipid-anchor ; Cytoplasmic side . Endoplasmic reticulum membrane ; Lipid-anchor . Golgi apparatus membrane ; Lipid-anchor . Cytoplasmic vesicle, secretory vesicle, acrosome . Localized in the Golgi apparatus in the round spermatids and in the acrosome in the elongating spermatid. .
Tissue Specificity	Expressed in kidney, prostate, lung, liver, thymus, colon, pancreas, and skeletal muscle, and low levels in placenta. Not detected in heart, brain, spleen, testis, ovary, small intestine and leukocyte.
Function	function:Required for protein transport from the endoplasmic reticulum to the Golgi complex .,similarity:Belongs to the small GTPase superfamily. Rab family.,tissue specificity:Expressed in kidney, prostate, lung, liver, thymus, colon, pancreas, and skeletal muscle, and low levels in placenta. Not detected in heart, brain, spleen, testis, ovary, small intestine and leukocyte.,
Background	Members of the Rab protein family are nontransforming monomeric GTP-binding proteins of the Ras superfamily that contain 4 highly conserved regions involved in GTP binding and hydrolysis. Rab proteins are prenylated, membrane-bound proteins involved in vesicular fusion and trafficking; see MIM 179508.[supplied by OMIM, Apr 2006],



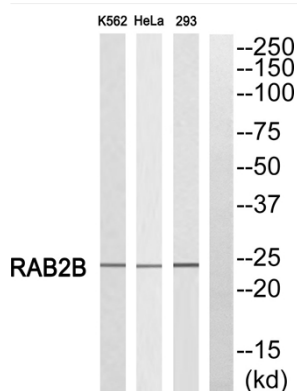
matters needing attention

Avoid repeated freezing and thawing!

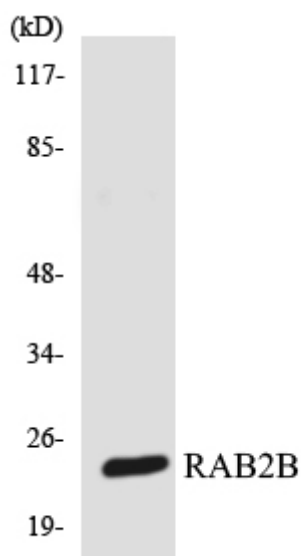
Usage suggestions

This product can be used in immunological reaction related experiments. For more information, please consult technical personnel.

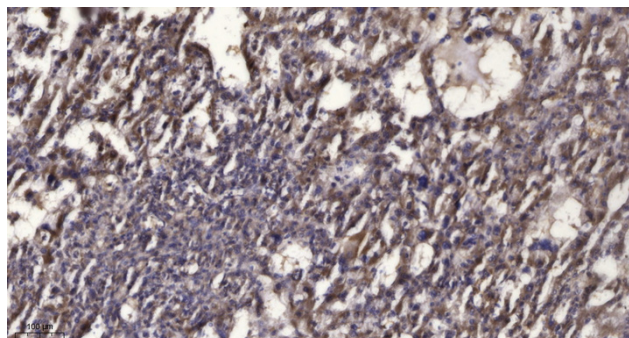
Products Images



Western blot analysis of RAB2B Antibody. The lane on the right is blocked with the RAB2B peptide.



Western blot analysis of the lysates from 293 cells using RAB2B antibody.



Immunohistochemical analysis of paraffin-embedded human liver cancer. 1, Antibody was diluted at 1:200(4° overnight). 2, Tris-EDTA, pH9.0 was used for antigen retrieval. 3, Secondary antibody was diluted at 1:200(room temperature, 45min).